

# Spelling Strategies

# Sand and Lego

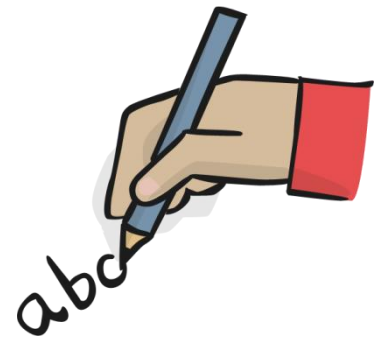
Study the word.



**Write the word in the  
sand with the Lego  
pieces to make  
imprints.**

# Speed Writing

How often can you  
write the word correctly  
in one minute?



# Mnemonics

Making up a “**story**” to help spell a word.



**sad** – sally **ate** **d**umplings.

# Syllables/Chunks

Breaking the words into parts.

Clapping the sounds.



jogging

jogging

flying

fly ing

returned

re turn ed

# Look for **Small Words** **Inside** the Word

about

a, out, bout

teacher

tea, each, her,  
ache

# Use of Colour

Use a different  
colour for each  
letter.

# Different Sizes of Letters

Use different sizes of letters to help remember the letters in the word.



apple – ApPLE



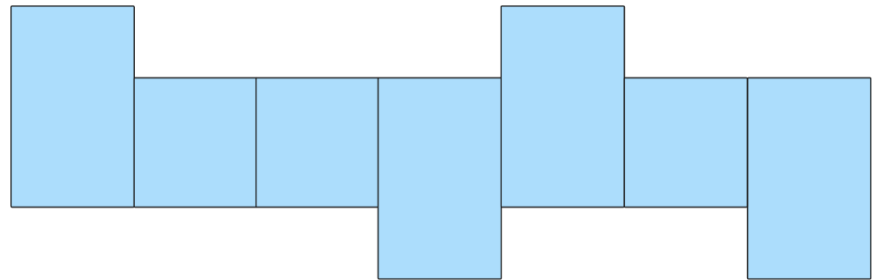
painting - PaInTiNg



# Shapes of Words

Draw the shape of  
the word.

display



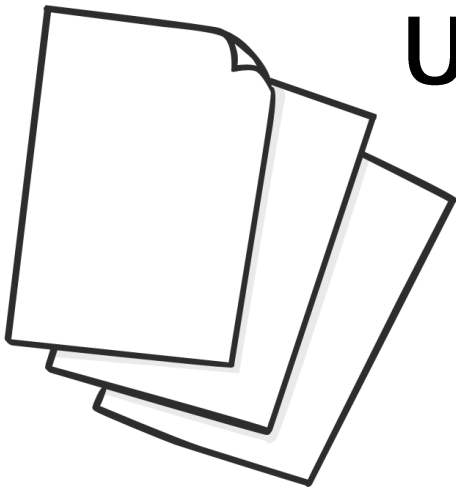
# In Sand

Or using different materials;

paint, clay, paper.

Using different textures;

sandpaper.



# Visualising

Look at your word.

“Throw” it at the wall.

Can you still “see” it?

Spell it aloud.

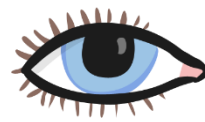
# Writing the Word in Fancy Letters

Bubble

*cursive*

*italics*

Look



Say



Cover



Write



Check



# Three Times

Write the word three times and  
in **different** colours.

three

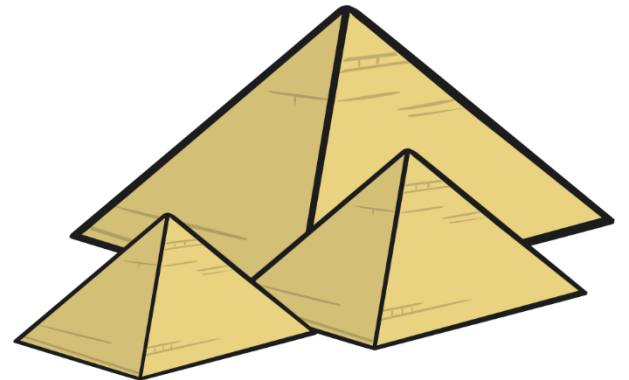
three

three

# Pyramid Writing

Write your word in the  
shape of a pyramid.

d  
do  
dog



# Consonant Circles

Write the word then circle all the consonants.

**b** e **l** i e **v** e



# Blue Vowels

a e i o u

Write the word then go  
over each vowel in blue.

b e l i e v e

# Words Without **Vowels**

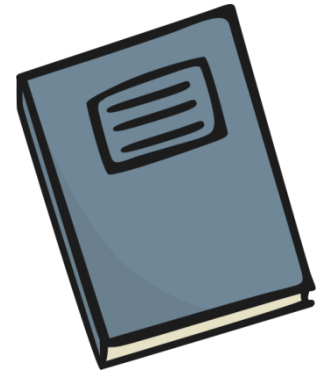
Write each word with a line instead of each vowel.

Go back later and fill in the missing vowels.

b \_ l \_ \_ v \_

# Dictionary Race

In small groups, each with a dictionary, each pupil chooses a word for the others to find as quickly as possible.

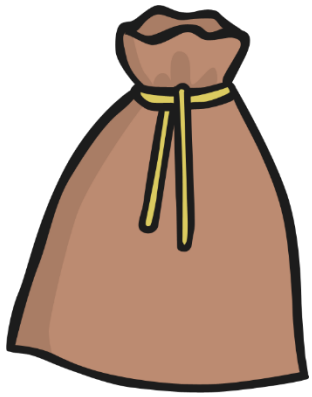


# Muddled Letters

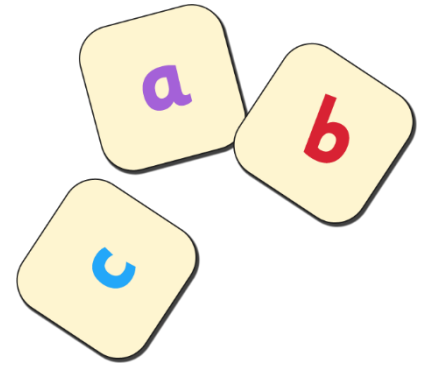
Pupils rearrange the letters of words making sure to always start with the original letter.

Get other pupils to correct them.

**Y**seertyad - yesterday



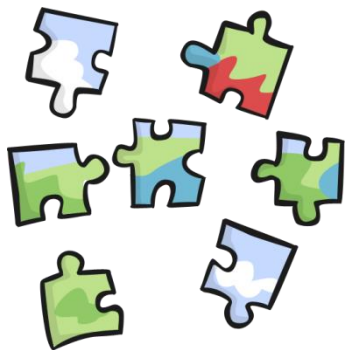
# Lucky Dip



Pupils take it in turns to take out letters from a bag displaying them in front of them. Carry on until someone can spell one of their words.

# Jigsaw

Teacher chooses a more difficult word. Write the word out 4 times and cut each word up. Pupils have to match the sections together.



ele ph an t  
e le p hant  
elep ha nt

# Word Sort

Pupils have copies of the words that they are learning – one word per card. Clues are read out, pupils have to identify words and place them face down.

5 letters

Double consonant

2 vowels

**The End**